

POWERFULFOREX

Requirements

PowerfulForex EA works on MetaTrader 4 terminal only. It was created for trading on AUDUSD and EURUSD currency pairs. Minimal deposit is \$340 for both pairs using lot 0.01. Recommended leverage is from 1:100 (bigger leverage is better for reliability).

Contact our support (support@powerfulforex.com) if your parameters are lower than the requirements above.

Quick start

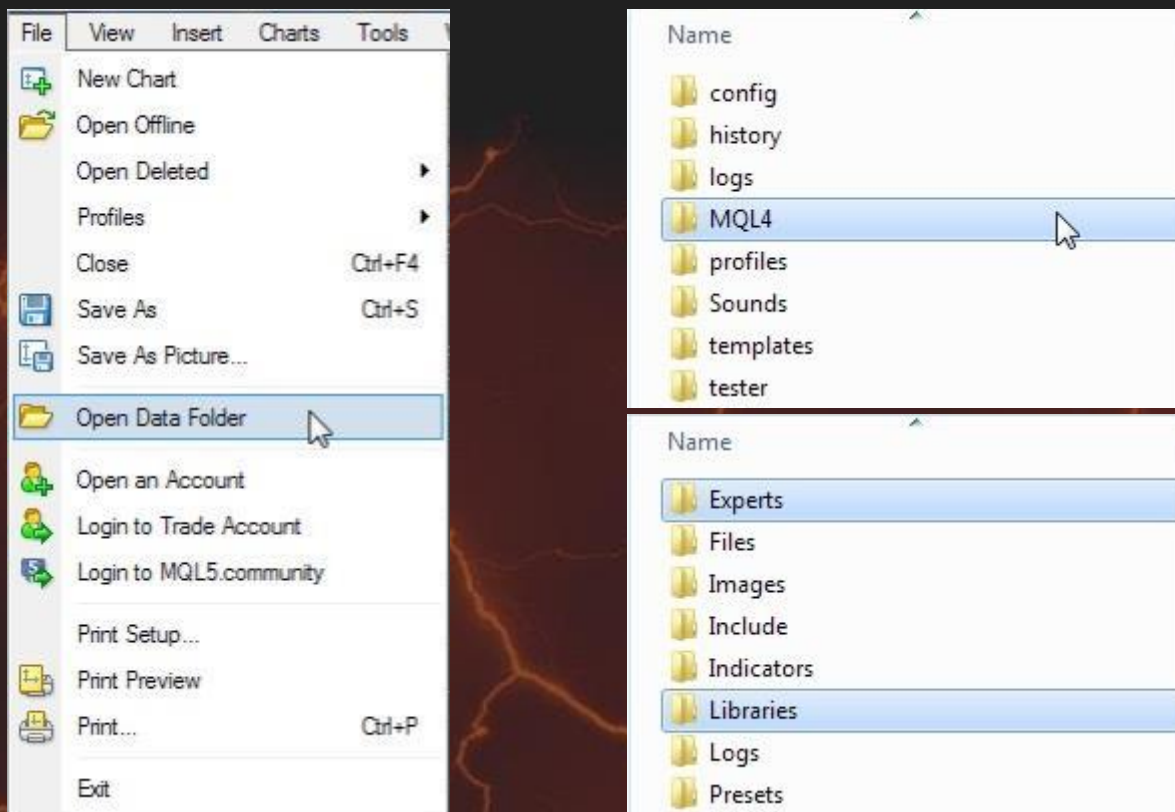
- Run your MetaTrader 4 terminal.
- Open menu “Files”, then “Open Data Folder”.
- Copy the EA’s files from the archive into data folder of your MetaTrader 4 terminal:
 - PowerfulForex.ex4 file to MQL\Experts
 - ForexStore.dll file to MQL\Libraries

(more detailed information about the necessary folders is [here](#))
- Restart your MetaTrader 4 terminal.
- Attach PowerfulForex to EURUSD chart with any time frame. Please notice, you do not need to attach the EA on two charts. PowerfulForex will trade on all the supported currency pairs, if you attach the EA to one chart only.
- Allow “Live trading” and “DLL imports” in Common settings.

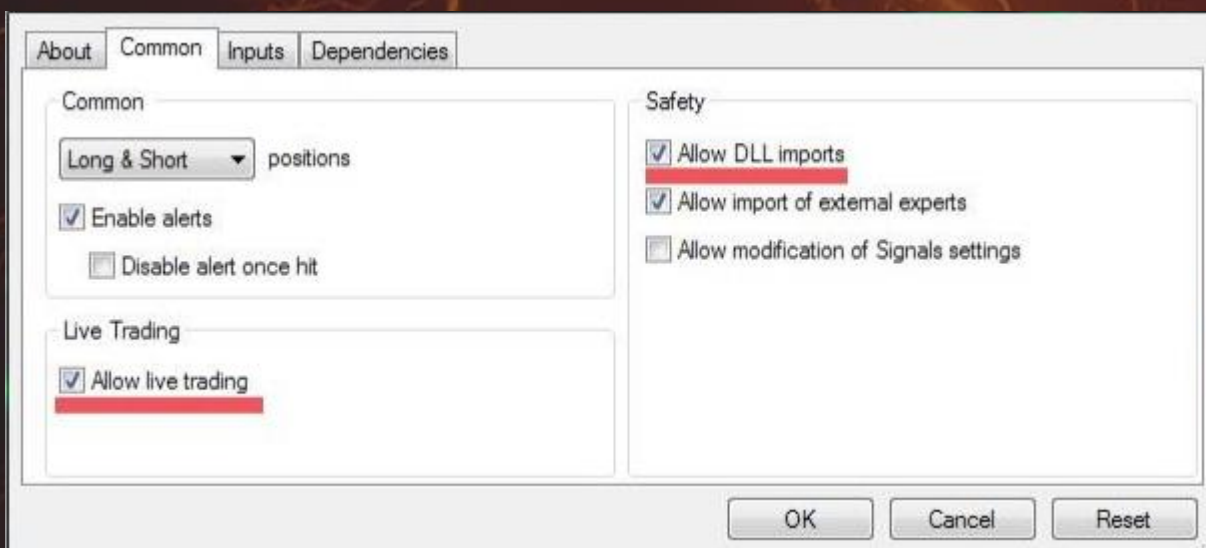
(example of the correctly selected Common settings is [here](#))
- Leave the default values of Input settings or set the desired values there.

(explanation of PowerfulForex parameters is [here](#))
- Make sure that “AutoTrading” is enabled on your MetaTrader 4 terminal.

How to find the “Experts” and “Libraries” folders



How to allow “Live trading” and “DLL imports”



The explanation of PowerfulForex parameters

RiskLimit is a percentage of your deposit based on which the EA calculates the first lot. Other lots are based on that first lot. The default value is recommended.

Lot is the first lot, which you can set manually. It works only if RiskLimit=0.

Slippage means slippage. Do not change it unless you know well what you are doing.

Trade on AUDUSD/EURUSD is enabling/disabling the trading on a corresponding currency pair.

NFA - if "Yes", the EA will disable opening of possible opposite trades (no hedge) and apply FIFO rule. If "No", the EA will trade without NFA limitations. **Hide Stops** will hide SL and TP for all orders, if that is needed, and the EA will close trades in the necessary moments at their Market prices, same as on our account. Please notice, despite the fact of enabling NFA option, some brokers may show a FIFO error from time to time, but it is not dangerous for the logic of the EA.

Contact our support (support@powerfulforex.com) if you have any questions.

